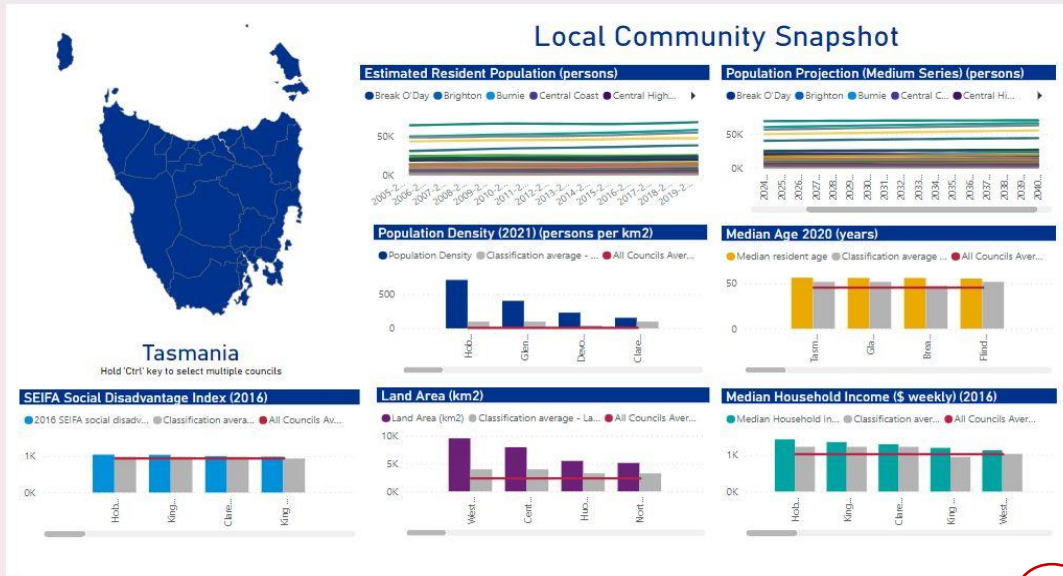


Local Government Profile

Dashboard Instructions

# Basic functionality



The button on the bottom right will expand the Dashboard to your full screen



Microsoft Power BI

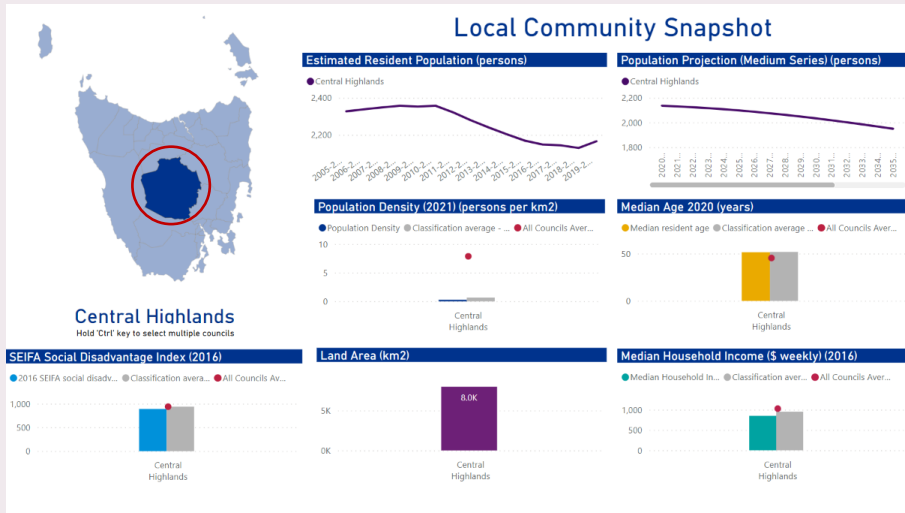
< 1 of 8 >



Clicking on the page number in the bottom centre of the Dashboard brings up a menu of all pages. From here you can navigate to any other page in the Dashboard.

You can also navigate left to right through the pages by clicking the arrows.

# Local Community Snapshot

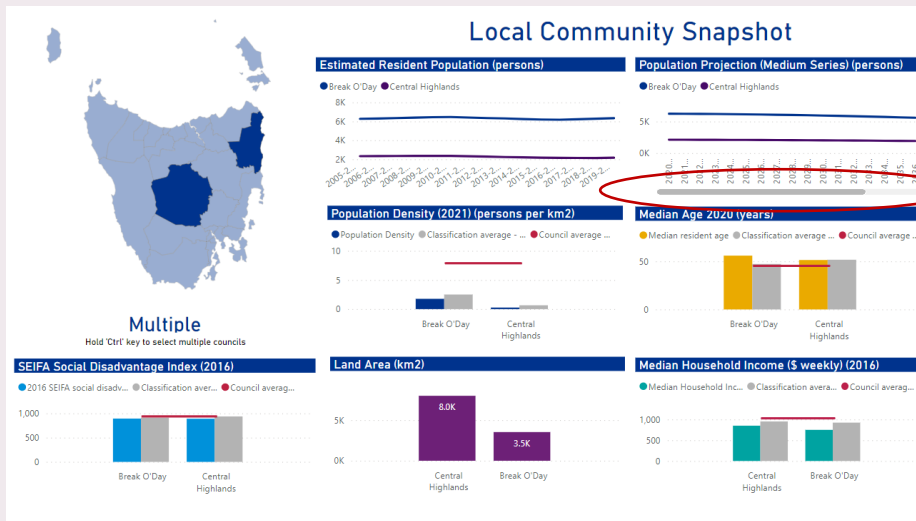


Selecting a single council:

Click on a council on the map of Tasmania and relevant information for that council will be shown.

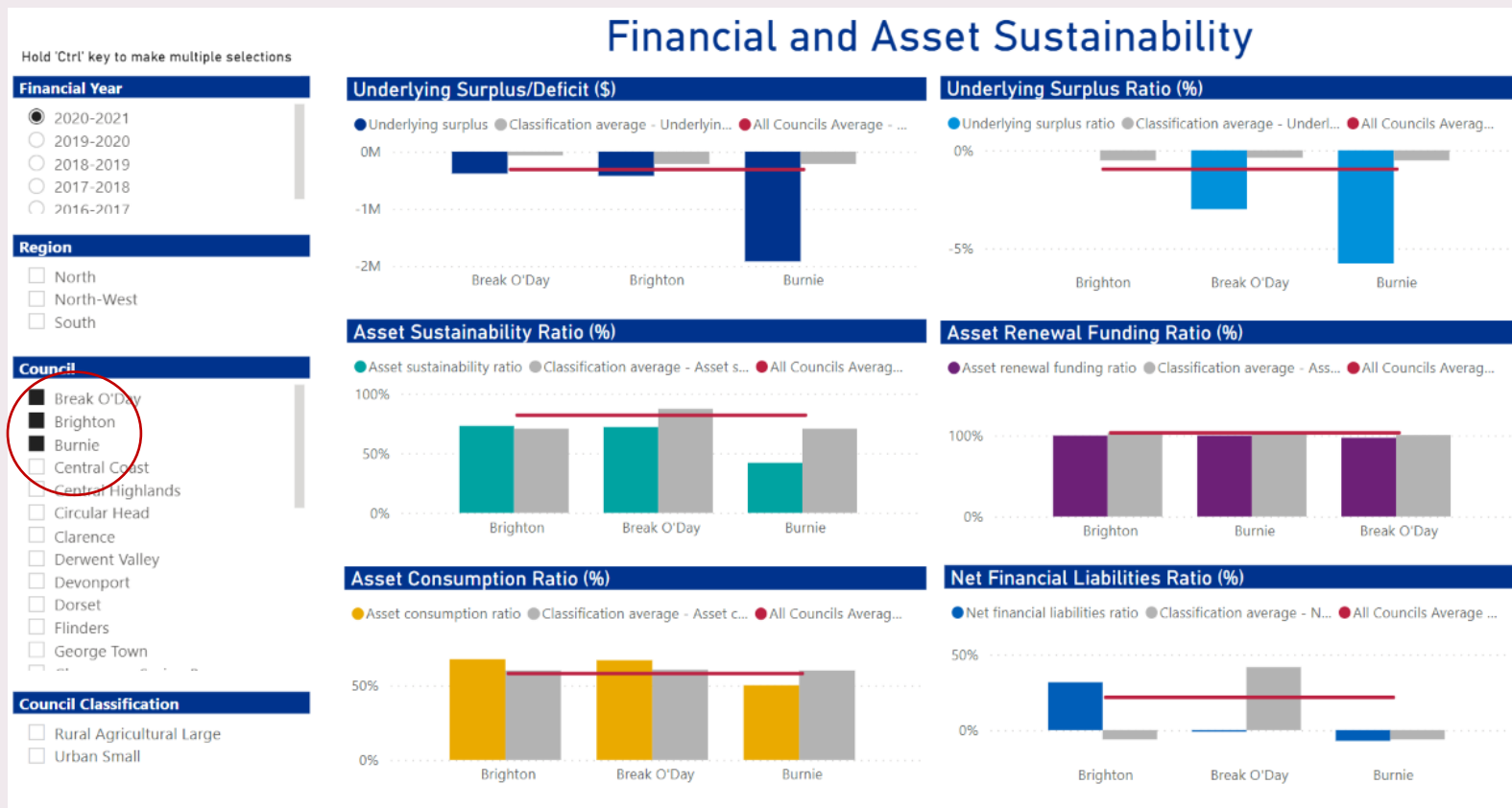
Selecting multiple councils:

Hold in the 'Ctrl' key and click on additional councils. Selecting multiple councils allows you to make comparisons.



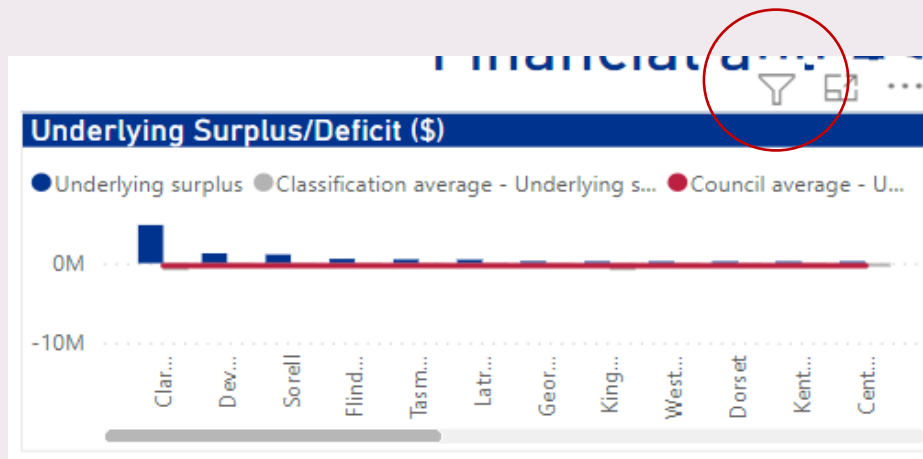
Click and drag the slider bar to navigate left to right to view other councils.

# How to navigate other pages



First, select a year at the top left (only one financial year can be viewed at a time). Then you can choose to filter by region, individual council or council classification by clicking in the box next to filter you wish to apply. You can select multiple filters by holding in the 'Ctrl' key when clicking on the filters.

# Check what filters are being applied

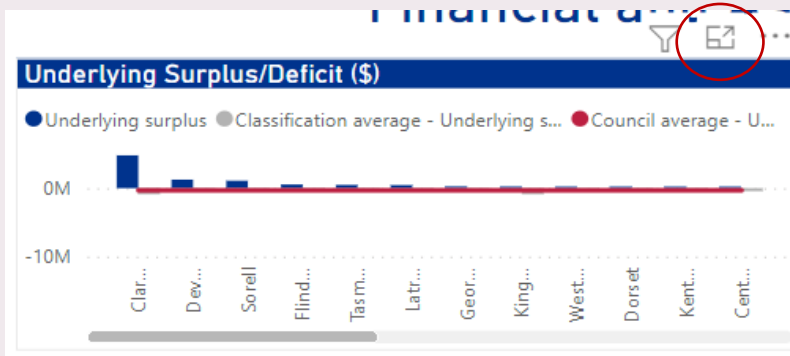


The 'filter' button will show you what filters are currently being applied to the visual .

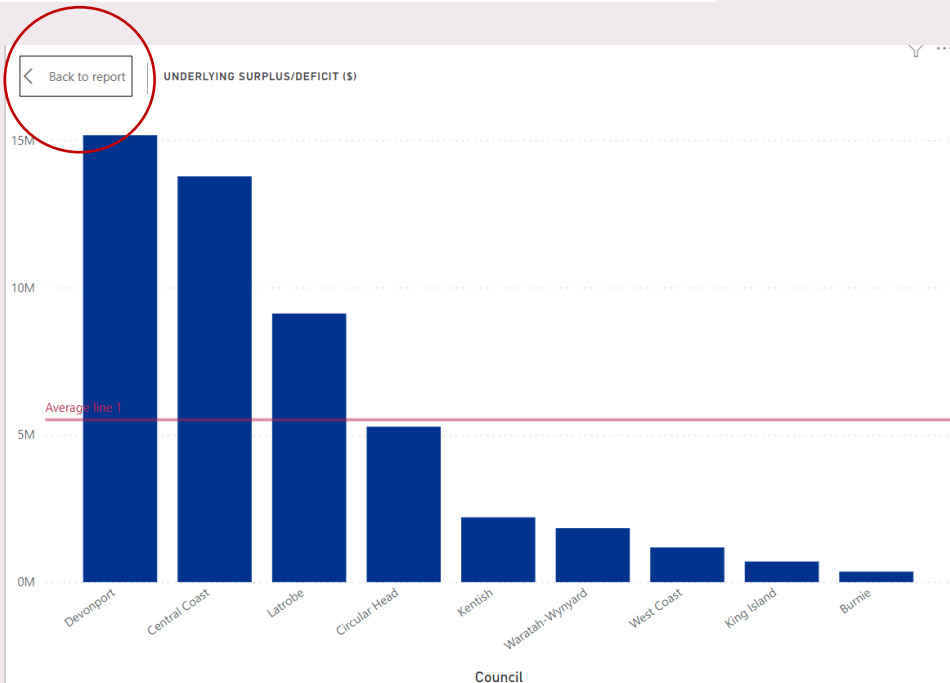
The screenshot shows the 'Filters and slicers affecting this visual' panel. It contains two filter boxes: 'Region' is set to 'North-West' and 'Year' is set to '2020-2021'.

Filter	Value
Region	North-West
Year	2020-2021

# Expanding a visual

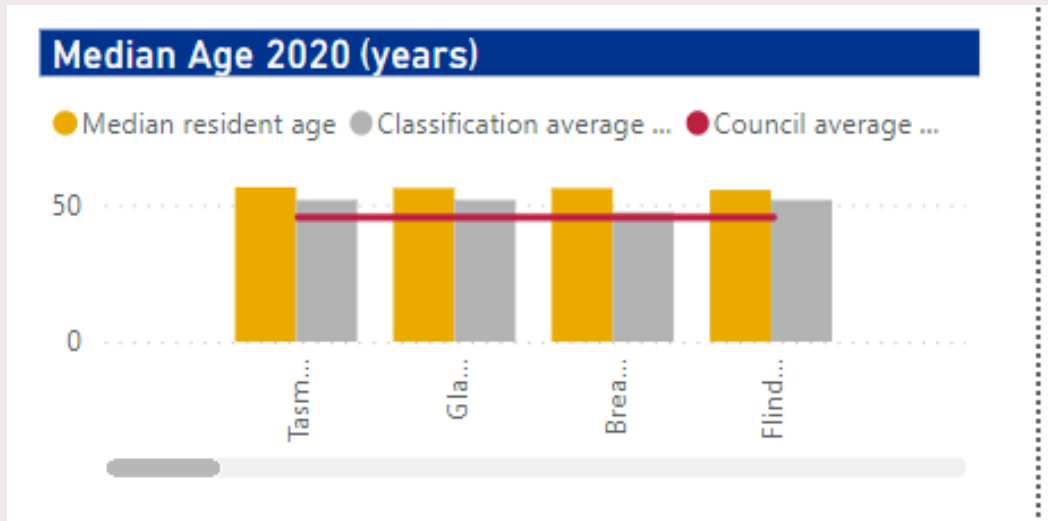


The 'expand visual' button will expand the visual to be full screen.'



The 'Back to report' button will take you back to the full page with all visuals.

# Understanding averages



The **red** line (Council average) represents the average across all 29 councils, regardless of which council has been selected.

The grey column (Classification average) represents the average across all of the councils in same classification as the selected council e.g. 'Urban Small'.